



PIPE SLEEVE

PLASTIC SLEEVE HOLE

New construction floor and wall penetrations made easy with Allfasteners pipe sleeves. Internal ribs prevent sleeves from cracking during concrete pours, and the heavy duty nailing ring keeps sleeve fastened. Smooth exterior and tapered design allows for simple release from concrete. Use vertically and horizontally for both floor and wall installations. For use in electrical, mechanical and plumbing installations and concrete casting applications. Stackable feature allows extension to higher elevations.



KEY FEATURES

- Specially designed with dual 3° and 1° taper for easy release from concrete
- Dual taper minimizes fire-packing needed during pipe installation
- Smooth exterior prevents sleeves from sticking to concrete
- Internal supports prevent sleeves from cracking during rough concrete pours
- Thick nailing ring keeps sleeve fastened to decking even in the toughest environments
- Versatile; use vertically and horizontally for both floor and wall installations
- Unique design features 1° and 3° dual taper
- Smooth exterior releases from concrete easily
- Internal ribs and thick nailing ring provide extra strength
- For use in electrical, mechanical and plumbing installations and concrete casting applications
- Plastic Hole Form made from HDPE Polyethylene

APPLICATIONS

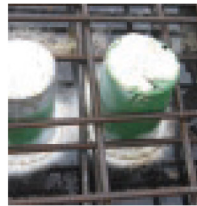
ELIMINATE CONCRETE HOLE FORM PROBLEMS



Concrete filled sleeves



Excessive nailing



Cracked and broken Sleeves



Sleeves stuck in concrete after pour

ORDERING INFORMATION

PART #	SIZE (A)	HEIGHT (B)	DOUBLE STACK HEIGHT (C)	QUANTITY / CASE
13P3051	2"	8"	12"	90 / CASE
13P3060	3"	8"	12"	80 / CASE
13P3061	4"	8"	12"	45 / CASE
13P3062	5"	8"	12"	30 / CASE
13P3063	6"	8"	12"	24 / CASE
13P3064	8"	8"	12"	36 / CASE
13P3056	10"	8"	12"	12 / CASE

NOTE: Use 1 or 2 sizes larger than pipe size.

