

T-BOLT W/ RIBBED FLAT WASHER

FOR ALL THINGS FASTENING.

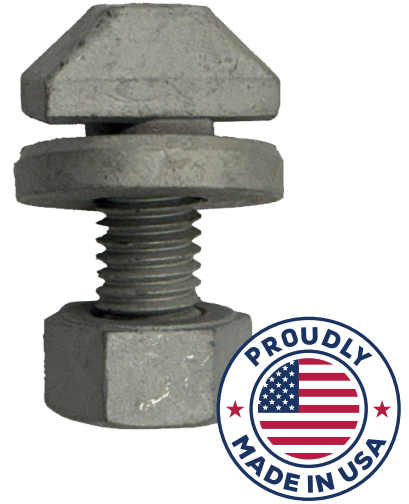
CUSTOMER SERVICE: 888.859.6060 | SALES@ALLFASTENERS.COM

PART# 2TBN12138-USA

The AF T-Bolt assembly is intended for use with the NexSpan2™ F Series product line, allowing for easy installation utilizing the members' slotted design. The T-bolt's toothed head design and grip washer prevents movement and loosening once fully tightened.

Engineered for efficiency in the field, the assembly helps reduce install time while maintaining consistent, reliable performance across a wide range of applications. Its robust construction is designed to withstand demanding jobsite conditions, ensuring long-term durability and secure connections.

Patent pending, the AF T-Bolt represents an innovative fastening solution built to enhance both speed and confidence during installation.



TECHNICAL DETAILS

PACK QTY	200
BOLT MATERIAL	ASTM A490 Equivalent
FINISH	Magni Coated
ALLOWABLE BOLT TENSION	11,094 lbs.
ALLOWABLE BOLT PULL-OUT	1,000 lbs.
ALLOWABLE BOLT SHEAR	6,676 lbs.
ALLOWABLE BOLT SLIP IN SHEAR	2,000 lbs.
ALLOWABLE BOLT BEARING PERPENDICULAR TO SLOT	2,610 lbs.
TIGHTENING TORQUE	140 ft-lbs.
DIAMETER	0.5 in.
BOLT LENGTH	1.47 in.
OVERALL LENGTH	2.00 in.
HEAD WIDTH	1.125 in.
WASHER DIAMETER	1.250 in.
WASHER THICKNESS	0.250 in.
NUT	7/8 in. WAF Heavy Hex

***Note:** All loads have a factor of safety of 2.0. The loads for Bearing and Pull-Out are based on the NexSpan2™ F Series product line tube members. Allowable Bolt Tension and Shear capacities provided for reference. Pullout, Slip and Bearing typically govern the design.

T-Bolt (2TBN12138-USA) Installation Instructions

***Note:** Once the T-bolt has been tightened, it cannot be re-used.



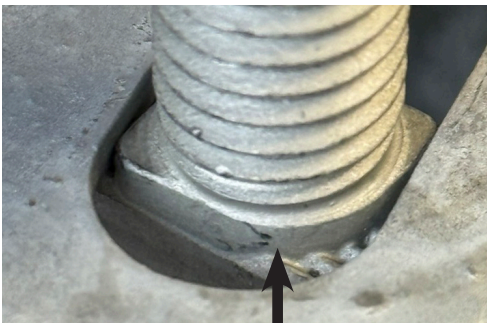
1. Align T-bolt head with slots in NexSpan2™ components and tube. Note that the vertical line on the end of the T-bolt is parallel to the slots in this orientation.



2. Insert the T-bolt into the slots, with the vertical line still parallel.



3. Turn the T-bolt 90 degrees so that the T-bolt head is perpendicular to the slots, and the positioning lip is engaged in the slot to prevent further rotation.



3. Positioning Lip



4. Tighten the nut to its final torque of 140 ft-lbs. **Note:** proper adherence to the 140-ft-lb torque requirement is critical for proper system performance.



5. Structures that are assembled prior to delivery - upon delivery perform a visual T-Bolt inspection and replace/tighten any T-Bolts that show signs of loosening.

Recommended Best Practices

For added verification after installation, it is recommended to apply a torque seal paint once the T-bolt assembly has been properly tightened to the specified torque. Apply a visible line of torque seal across the nut and onto the adjoining surface of the member.

This mark provides a quick visual indicator during inspection—if the line becomes misaligned or disturbed, it may indicate that the connection has been altered and should be checked.

