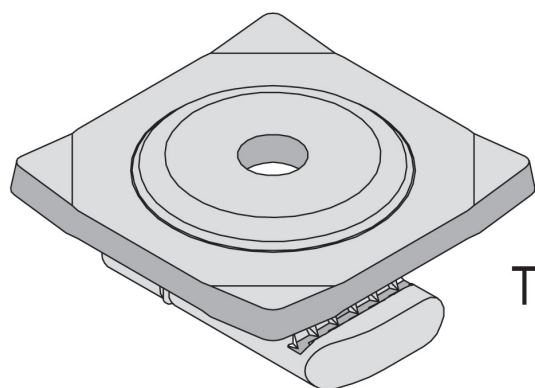
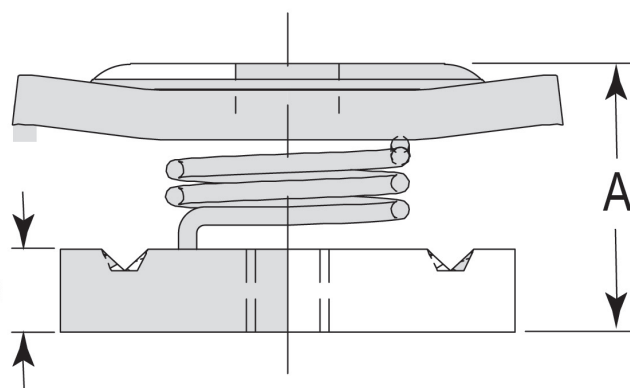




# CHANNEL NUTS WITH WASHER



Thickness



## PRODUCT SPECIFICATIONS

- Carbon Steel – ASTM A1011-00 SS GR 33 or ASTM A1011-00CS Type B
- EG – Electro-Galvanized. Electroplating deposits zinc on the surface of the steel by electrolysis from a bath of zinc salts. Recommended for relatively dry indoor use. This is the standard coating for most Phoenix products. Thickness of applied zinc is between 0.2 mils to 0.5 mils [5.1  $\mu\text{m}$  to 12.7  $\mu\text{m}$ ]. Coatings on Phoenix EG products meet ASTM B633 SC1 Type III.

Note: Specifications subject to change without notice.

Part #	Thread Size	Nut Thickness		A		Weight (lbs.)
		in.	mm.	in.	mm.	
6CNW1420EG	1/4"- 20	0.37	9.4	0.81	20.6	0.120
6CNW3816EG	3/8"- 16	0.37	9.4	0.81	20.6	0.120
6CNW1213EG	1/2"- 13	0.50	12.7	0.91	23.1	0.130