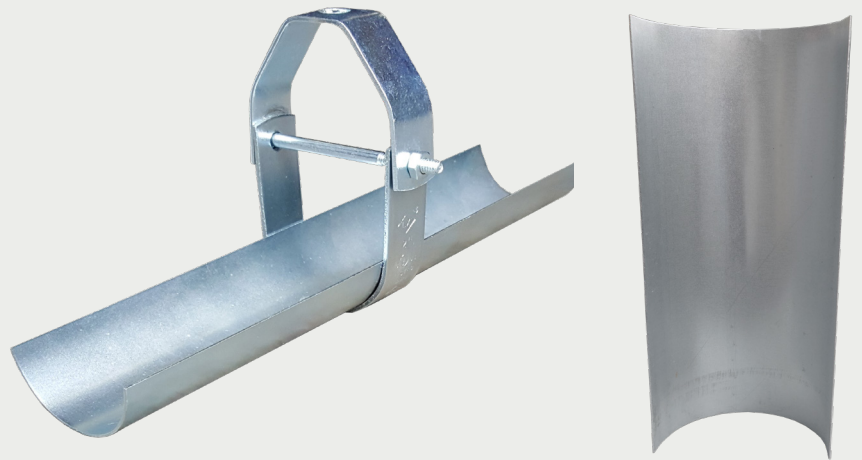


# CLEVIS HANGER W/ SHIELD

## ELECTRO-GALVANIZED

CERTIFICATION

TECHNICAL DATA



**FOR INSTALL SUPPORT**  
[sales@allfasteners.com](mailto:sales@allfasteners.com)



**FOR SPECIFICATION SUPPORT**  
[certs@allfasteners.com](mailto:certs@allfasteners.com)



**FOR CUSTOMER SUPPORT**  
888.859.6060



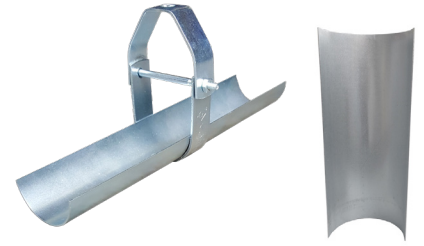
# CLEVIS HANGER W/ SHIELD

ELECTRO-GALVANIZED

**Clevis Hangers with Shields** are designed for suspension stationary insulated pipes.

Insulation protection shield is spot welded in place onto Electro-Galvanized Clevis Hanger. For clevis hanger data, see Technical Data Sheet titled 'Clevis Hanger / Plain finish, electro-galvanized finish, copper epoxy coating'. Note, part numbers on this sheet consist of the welded assembly of shield welded to clevis hanger.

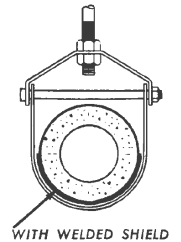
The shield is also available separately. Ordering information can be found on this sheet.



## KEY BENEFITS

- Electro-Galvanized
- Shield is spot welded in place
- Shield prevents hanger from cutting through insulation

## DIMENSIONAL DATA



**TABLE 1: DIMENSIONAL DATA OF CLEVIS HANGER W/ SHIELD**

PIPE SIZE (in.)	WELDED ASSEMBLY SIZE*					
	THICKNESS OF PIPE INSULATION					
	1/2"	1"	1-1/2"	2"	2-1/2"	3"
1/2	1-1/2	2-1/2	3-1/2	5	6	7
3/4	2	3	3-1/2	5	6	7
1	2	3	4	5	6	7
1-1/4	2-1/2	3-1/2	4	5	6	7
1-1/2	2-1/2	3-1/2	5	6	7	8
2	3	4	5	6	7	8
2-1/2	3-1/2	5	6	7	8	10
3	4	5	6	7	8	10
3-1/2	5	6	7	8	10	10
4	5	6	7	8	10	10
5	6	7	8	10	10	12
6	7	8	10	10	12	12
8	10	10	12	12	14	16
10	12	12	14	16	16	18
12	14	16	16	18	18	20
14	16	16	18	18	20	20
16	18	18	20	20s	24	24

**CLEVIS HANGER W/ SHIELD**  
ELECTRO-GALVANIZED**ORDERING INFORMATION****TABLE 2: ORDERING INFORMATION OF CLEVIS HANGER W/ SHIELD**

STANDARD CLEVIS HANGER - WITH WELDED SHIELD			
PART #	SIZE	SHIELD LENGTH	QUANTITY / BOX
6CHSGV0200	2"	12"	1 / Box
6CHSGV0300	3"	12"	1 / Box
6CHSGV0312	3-1/2"	12"	1 / Box
6CHSGV0400	4"	12"	1 / Box
6CHSGV0500	5"	18"	1 / Box
6CHSGV0600	6"	18"	1 / Box
6CHSGV0700	7"	24"	1 / Box
6CHSGV0800	8"	24"	1 / Box
6CHSGV1000	10"	24"	1 / Box
6CHSGV1200	12"	24"	1 / Box
6CHSGV1400	14"	24"	1 / Box
6CHSGV1800	18"	24"	1 / Box

**TABLE 3: MATERIAL INFORMATION**

<b>MATERIAL</b>	Carbon steel clevis hanger with pre-galvanized shield
<b>FINISH</b>	Electro-galvanized
<b>SERVICES</b>	Designed for the suspension of stationary insulated pipe lines. Insulation protection shield is spot welded to the clevis hanger.
<b>ORDERING</b>	Specify part number
<b>NOTES</b>	Upper locknut must be tightened securely to assure proper hanger performance.

**TABLE 4: ORDERING INFORMATION OF INSULATION PROTECTION SHIELD**

INSULATION PROTECTION SHIELD			
PART #	SIZE	SHIELD I.D.	QUANTITY / BOX
6IPSG0200H	2 x 12"	2-3/8"	1 / Box
6IPSG0300H	3 x 12"	3-1/2"	1 / Box
6IPSG0400H	4 x 12"	4-1/2"	1 / Box
6IPSG0500H	5 x 18"	5-5/8"	1 / Box
6IPSG0600H	6 x 18"	6-5/8"	1 / Box