

CUSHION STRUT PIPE CLAMPS

YELLOW ZINC, ELECTRO-GALVANIZED & COPPER PLATED

CERTIFICATION

TECHNICAL DATA



FOR INSTALL SUPPORT

sales@allfasteners.com



FOR SPECIFICATION SUPPORT

certs@allfasteners.com



FOR CUSTOMER SUPPORT

888.859.6060



CUSHION STRUT PIPE CLAMPS

YELLOW ZINC, ELECTRO-GALVANIZED & COPPER PLATED

Cushion Strut Pipe Clamps are used to secure tubing or pipe to strut and is commonly used with copper piping. This provides vibration isolation or protection from dissimilar metals. These clamps work in temperatures ranging from -30° C to 120° C.



MATERIAL SPECIFICATIONS

TABLE 1: CUSHION STRUT PIPE CLAMP YELLOW ZINC MATERIAL SPECIFICATIONS

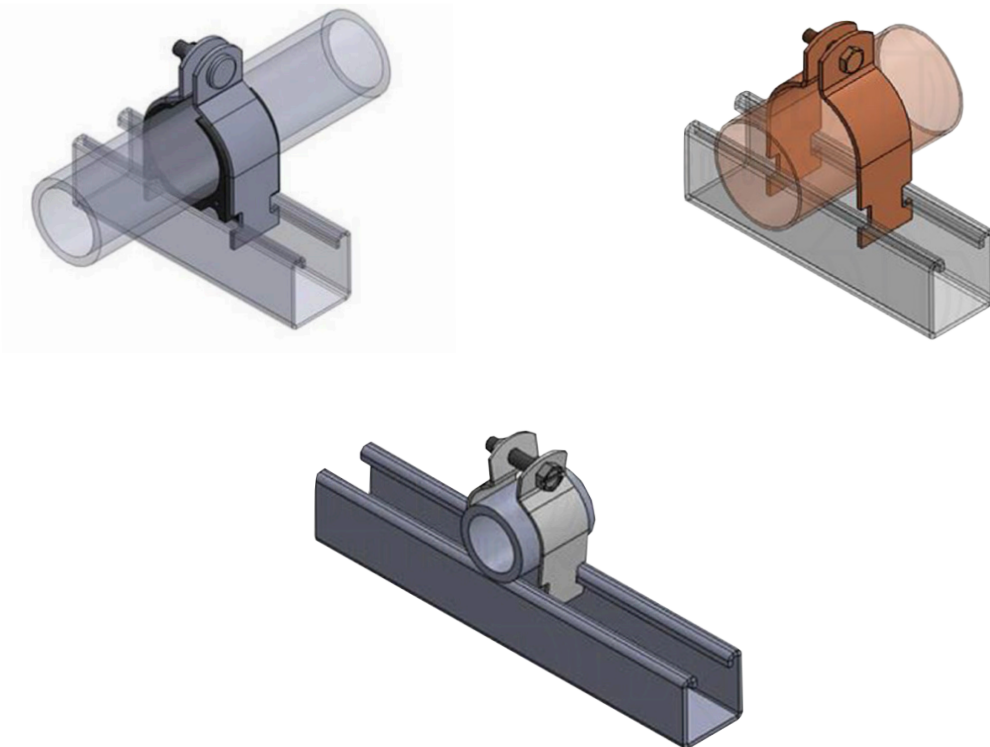
MATERIAL	Carbon Steel – ASTM A1011-00 SS GR 33 or ASTM A1011-00CS Type B
FINISH	Yellow Zinc Dichromate. A 0.5 mil [12.7 µm] electro-galvanized zinc plating meeting ASTM B633 SC1 Type III is applied to the surface of the metal. Yellow Dichromate is applied over the zinc. This results in a yellowish gold appearance and acts as a nonporous barrier sealant that is corrosion resistant and can be painted.

TABLE 2: CUSHION STRUT PIPE CLAMP ELECTRO-GALVANIZED MATERIAL SPECIFICATIONS

MATERIAL	Carbon Steel – ASTM A1011-00 SS GR 33 or ASTM A1011-00CS Type B
FINISH	Electro-Galvanized. Electroplating deposits zinc on the surface of the steel by electrolysis from a bath of zinc salts. Recommended for relatively dry indoor use. This is the standard coating for most Phoenix products. Thickness of applied zinc is between 0.2 mils to 0.5 mils [5.1 µm to 12.7 µm]. Coatings on Phoenix EG products meet ASTM B633 SC1 Type III.

TABLE 3: CUSHION STRUT PIPE CLAMP COPPER PLATED MATERIAL SPECIFICATIONS

MATERIAL	Carbon Steel – ASTM A1011-00 SS GR 33 or ASTM A1011-00CS Type B
FINISH	Copper Plated. Epoxy coated over telecom-galvanized steel (CT). Copper plated carbon steel (CTP)





CUSHION STRUT PIPE CLAMPS

YELLOW ZINC, ELECTRO-GALVANIZED & COPPER PLATED

TECHNICAL DATA

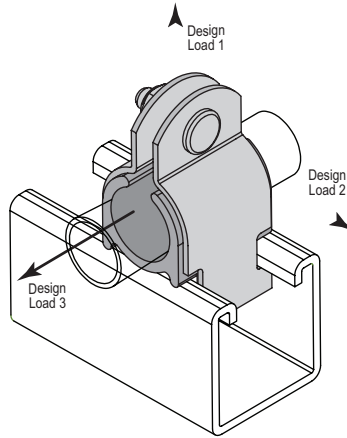


TABLE 4: CUSHION STRUT PIPE CLAMPS DESIGN LOAD DATA

NOMINAL PIPE SIZE		PIPE O.D.		DESIGN LOAD			WEIGHT
in.	DN (mm)	in.	mm	LOAD 1 lbs. (kN)	LOAD 2 lbs. (kN)	LOAD 3 lbs. (kN)	
1/4	8	0.540	13.7	400 (1.78)	50 (0.22)	50 (0.22)	0.12
3/8	10	0.675	17.1				0.14
1/2	15	0.840	21.3	600 (2.67)	75 (0.33)	75 (0.33)	0.19
3/4	20	1.050	26.7				0.23
1	25	1.315	33.4				0.24
1-1/4	32	1.660	42.2	800 (3.56)	125 (0.56)	125 (0.56)	0.42
1-1/2	40	1.900	48.3				0.42
2	50	2.375	60.3				0.49
2-1/2	65	2.875	73.0	1000 (4.45)	200 (0.89)	150 (0.67)	0.60
3	80	3.500	88.9				0.77
3-1/2	90	4.000	101.6				0.93
4	100	4.500	114.3	1000 (4.45)	200 (0.89)	150 (0.67)	1.10
5	125	5.562	141.3				1.13
6	150	6.625	168.3				1.26
8	200	8.625	219.1				1.80

**CUSHION STRUT PIPE CLAMPS**

YELLOW ZINC, ELECTRO-GALVANIZED & COPPER PLATED

TECHNICAL DATA**TABLE 5: CUSHION STRUT PIPE CLAMP YELLOW ZINC ORDERING INFORMATION**

PART NUMBER	NOMINAL PIPE SIZE	PIPE O.D.	QTY/BOX
6CUC0	1/8"	1/4"	1
6CUC0	1/4"	3/8"	1
6CUC0	3/8"	1/2"	1
6CUC0	1/2"	5/8"	1
6CUC0	5/8"	3/4"	1
6CUC0	3/4"	7/8"	1
6CUC0	1"	1-1/8"	1
6CUC0	1-1/4"	1-3/8"	1
6CUC0	1-1/2"	1-5/8"	1
6CUC0	2"	2-1/8"	1
6CUC0	2-1/2"	2-5/8"	1