



NEXSPAN2™ F SERIES SUBMITTAL PACKAGE

FOR MEP EQUIPMENT PLATFORMS

2	Introduction
3	T-Bolts & Slots
4-5	Application Examples
6-7	Ordering Information
8-9	Technical Specifications



OVERVIEW & INFORMATION

Allfasteners NexSpan2™ F Series is changing the game as modern contractors seek to simplify the design, fabrication, and installation of MEP equipment platforms and other steel structures.

NexSpan2 F Series' pre-engineered, modular design paired with the patent pending NexSpan2 T-Bolt and a complete range of connectors, provide an effortless framing system, eliminating the need for site welding and heavy cranes.



APPLICATIONS

▪ Data Centers

- Floor/Roof Mounted MEP Equipment Platforms
- Walkable Ceiling Structures
- Raised Floor Structures
- Chiller Piping Stands/Racks
- Multi-Level Trapeze Supports
- Transformer Platforms

▪ Hospitals

- Floor/Roof Mounted MEP Equipment Platforms
- HVAC Equipment Stands (VRF)
- Medical Gas Piping Stanchions

▪ Airports

- Floor/Roof Mounted MEP Equipment Platforms
- HVAC Equipment Stands (VRF)
- Chiller Piping Stanchions

▪ Water/Waste Treatment Plants

- Adjustable Pipe Stanchions
- Pump Stations
- Multi-Level Pipe Racks

▪ For Installing in Challenging Environments

KEY BENEFITS

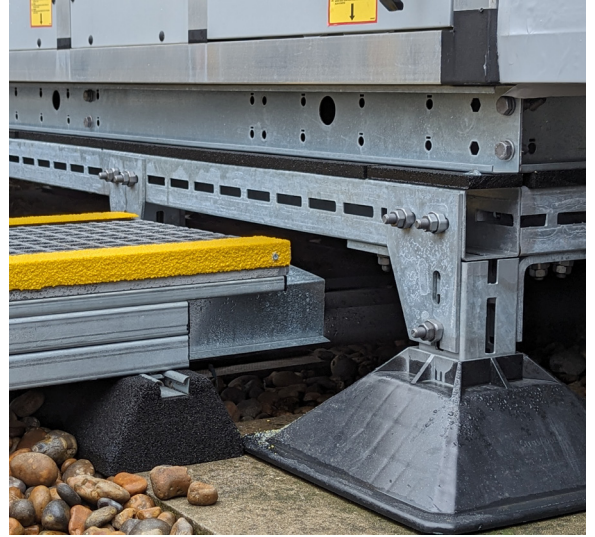
- Similar loading properties to welded steel frames
- No on-site welding needed
- Reduced need for crane work and heavy lifting equipment
- Easy adjustment/leveling
- Well suited for installation in challenging environments
- Rapidly assemble with only an impact driver or torque wrench
- Compact packaging allows for simple transport
- Cost effective compared to welding structural steel
- T-Bolts feature a slot in the shank end, indicating correct installation
- Hot Dip Galvanized
- Made in the USA



MODULAR DESIGN FOR FAST INSTALLATION

Allfasteners' NexSpan2™ F Series offers unparalleled efficiency, durability, and adaptability, making it the optimal choice for contractors operating in dynamic environments.

With its modular design, rapid installation process, and ability to support heavy loads, contractors can confidently rely on NexSpan2™ to meet the rigorous demands of modern construction projects, such as data centers, hospitals, waste/water treatment plants, and airports ensuring both quality and efficiency from start to finish.



T-BOLT & SLOTS

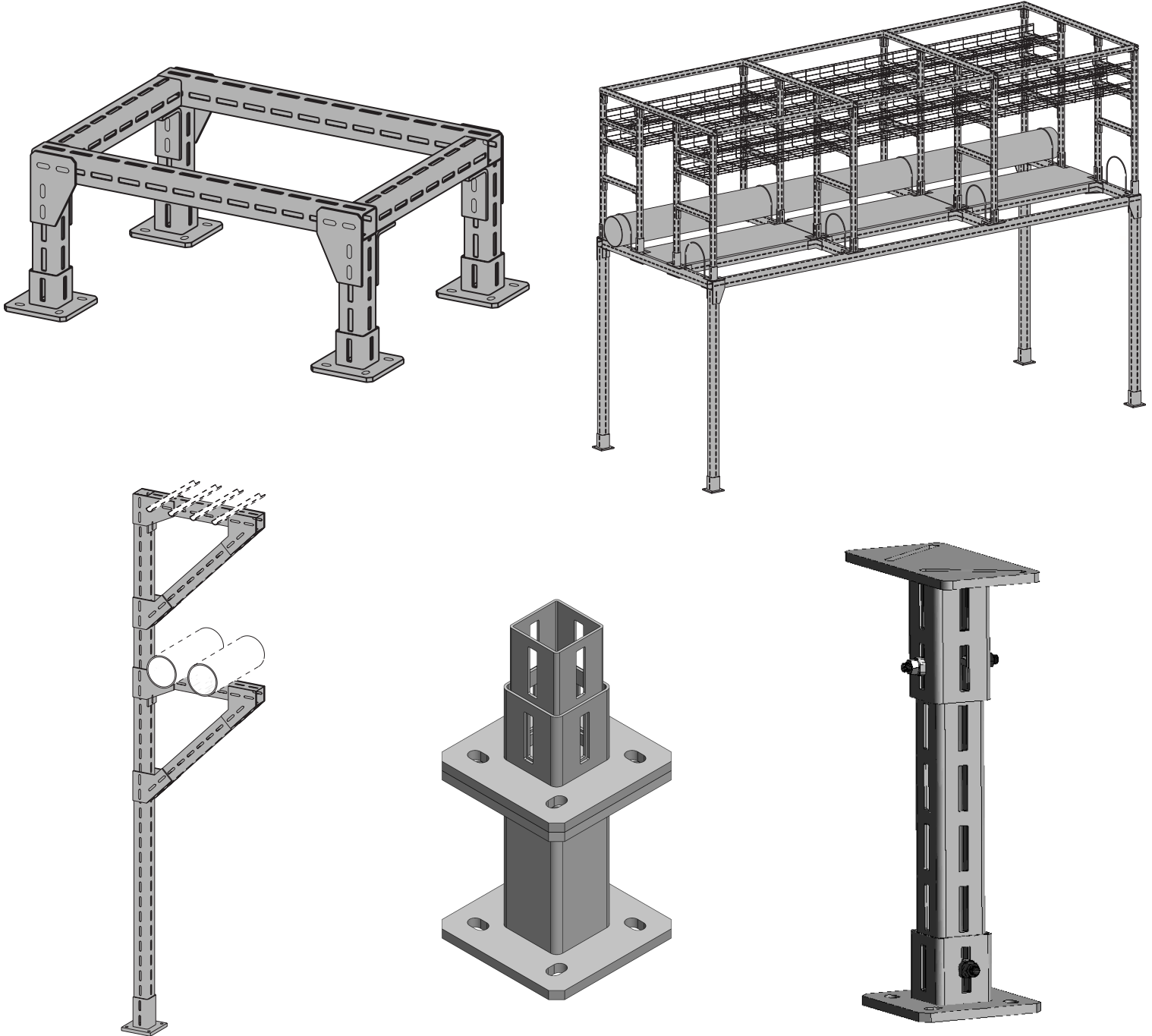
The NexSpan2™ F Series implements a unique M12 T-bolt made from 10.9 high grade steel up to 2,200 lbs load resistance. Paired with the NexSpan2's slot design, the T-bolt makes leveling frames and structures simple and fast - where traditional screw systems require precise alignment of holes.



APPLICATION EXAMPLES



APPLICATION EXAMPLES



ORDERING INFORMATION

TABLE 6: NEXSPAN2™ F SERIES ORDERING INFORMATION



PART #	SIZE	LENGTH	SLOT WIDTH
14NSF310	3 x 3 x 1/8"	10'	0.5625"
14NSF320	3 x 3 x 1/8"	20'	0.5625"
14NSF410	4 x 4 x 1/8"	10'	0.5625"
14NSF420	4 x 4 x 1/8"	20'	0.5625"

TABLE 7: NEXSPAN2™ END CAP ORDERING INFORMATION

PART #	NEXSPAN2 SIZE	FITS PART #
14NSF-EC3	3"	14NSF310 & 14NSF320
14NSF-EC4	4"	14NSF410 & 14NSF420

TABLE 8: NEXSPAN2™ T-BOLT ORDERING INFORMATION

PART #	NEXSPAN2 SIZE	FITS PART #
2TLB1240	M12 x 40MM T-Bolt	All F Series



TABLE 9: NEXSPAN2™ ANGLE ORDERING INFORMATION

PART #	NEXSPAN2 SIZE	FITS PART #
14NSF-A13	3"	14NSF310 & 14NSF320
14NSF-A14	4"	14NSF410 & 14NSF420

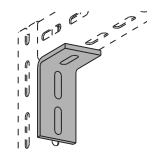


TABLE 10: NEXSPAN2™ ANGLE ORDERING INFORMATION

PART #	NEXSPAN2 SIZE	FITS PART #
14NSF-A23	3"	14NSF310 & 14NSF320
14NSF-A24	4"	14NSF410 & 14NSF420

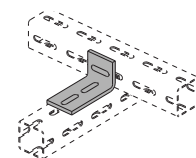


TABLE 11: NEXSPAN2™ ANGLE ORDERING INFORMATION

PART #	NEXSPAN2 SIZE	FITS PART #
14NSF-A43	3"	14NSF310 & 14NSF320
14NSF-A44	4"	14NSF410 & 14NSF420

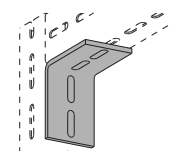
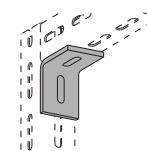


TABLE 12: NEXSPAN2™ ANGLE ORDERING INFORMATION

PART #	NEXSPAN2 SIZE	FITS PART #
14NSF-A53	3"	14NSF310 & 14NSF320
14NSF-A54	4"	14NSF410 & 14NSF420



ORDERING INFORMATION

TABLE 13: NEXSPAN2™ POST BASE ORDERING INFORMATION

PART #	NEXSPAN2 SIZE	FITS PART #
14NSF-B13	3"	14NSF310 & 14NSF320
14NSF-B14	4"	14NSF410 & 14NSF420

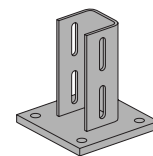


TABLE 14: NEXSPAN2™ PLATE ORDERING INFORMATION

PART #	NEXSPAN2 SIZE	FITS PART #
14NSF-P13	3"	14NSF310 & 14NSF320
14NSF-P14	4"	14NSF410 & 14NSF420

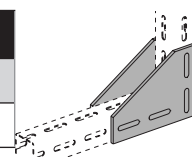


TABLE 15: NEXSPAN2™ PLATE ORDERING INFORMATION

PART #	NEXSPAN2 SIZE	FITS PART #
14NSF-P23	3"	14NSF310 & 14NSF320
14NSF-P24	4"	14NSF410 & 14NSF420

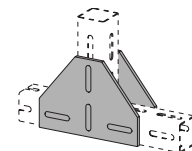


TABLE 16: NEXSPAN2™ PLATE ORDERING INFORMATION

PART #	NEXSPAN2 SIZE	FITS PART #
14NSF-P33	3"	14NSF310 & 14NSF320
14NSF-P34	4"	14NSF410 & 14NSF420

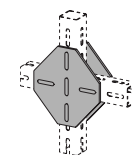


TABLE 17: NEXSPAN2™ PLATE ORDERING INFORMATION

PART #	NEXSPAN2 SIZE	FITS PART #
14NSF-P43	3"	14NSF310 & 14NSF320
14NSF-P44	4"	14NSF410 & 14NSF420

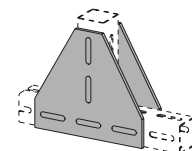


TABLE 18: NEXSPAN2™ PLATE ORDERING INFORMATION

PART #	NEXSPAN2 SIZE	FITS PART #
14NSF-P53	3"	14NSF310 & 14NSF320
14NSF-P54	4"	14NSF410 & 14NSF420

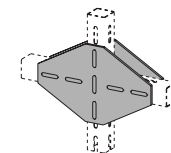
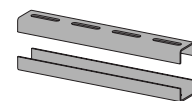


TABLE 19: NEXSPAN2™ SPLICE CONNECTOR ORDERING INFORMATION

PART #	NEXSPAN2 SIZE	FITS PART #
14NSF-S13	3"	14NSF310 & 14NSF320
14NSF-S14	4"	14NSF410 & 14NSF420



TECHNICAL SPECIFICATIONS

TABLE 20: MEMBER PROPERTIES

	UNITS	AF-NS2-3	AF-NS2-4
Depth	in	3.000	4.000
Width	in	3.000	4.000
Thickness	in	0.125	0.125
Wt/ft.	lb/ft	4.4	6.0

TABLE 21: SLOT DIMENSIONS

	UNITS	AF-NS2-3	AF-NS2-4
Height x Width	in.	9/16" x 2-3/4"	9/16" x 2-3/4"

TABLE 22: MATERIAL INFORMATION

	UNITS	AF-NS2-3	AF-NS2-4
ASTM Specification		A500 Gr B	A500 Gr B
Minimum Specified Yield Strength	ksi	46	46
Minimum Specified Tensile Strength	ksi	58	58
Modulus of Elasticity	ksi	29000	29000

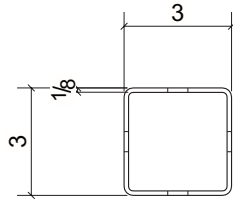
TABLE 23: GROSS SECTION PROPERTIES

	UNITS	AF-NS2-3	AF-NS2-4
Design Thickness	in	0.116	0.116
Area	in ²	1.300	1.770
Moment of Inertia	in ⁴	1.780	4.400
Radius of Gyration	in	1.170	1.580

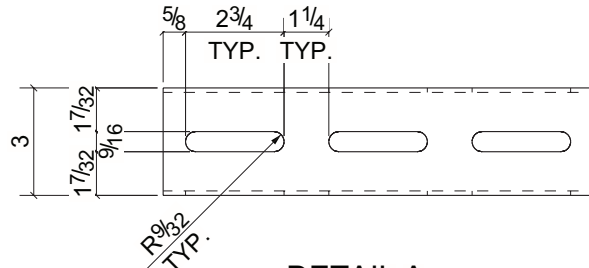
TABLE 24: EFFECTIVE SECTION PROPERTIES

	UNITS	AF-NS2-3	AF-NS2-4
Effective Area	in ²	1.043	1.506
Effective Web Area	in ²	0.458	0.689
Effective Moment of Inertia	in ⁴	1.507	3.903
Effective Section Modulus	in ³	1.005	1.952
Effective Radius of Gyration	in	1.203	1.610

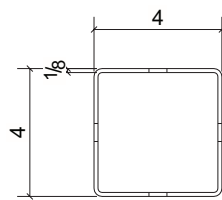
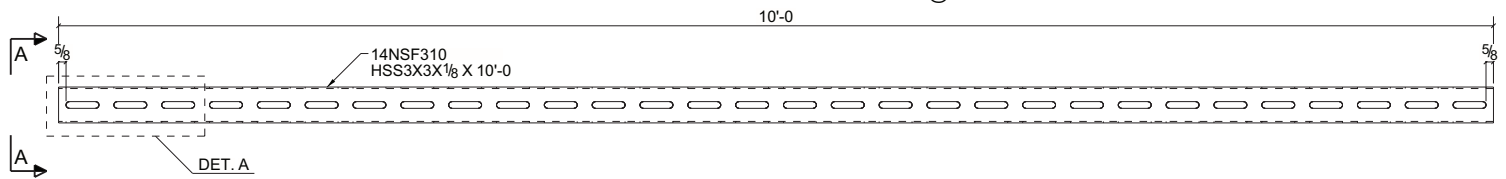
TECHNICAL SPECIFICATIONS



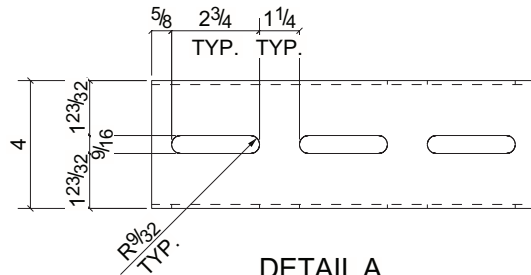
A-A



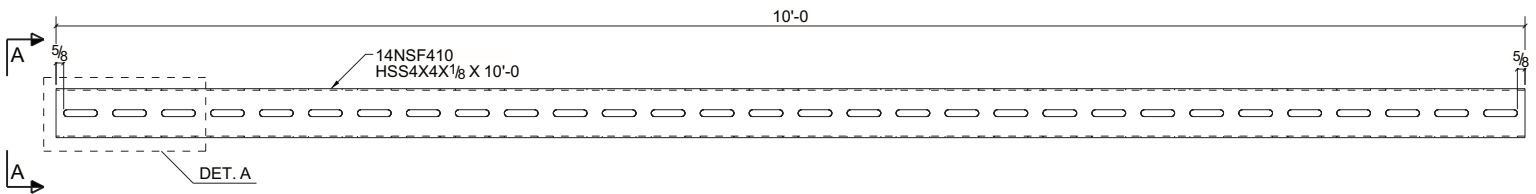
DETAIL A
TYP. @ ALL 4 SIDES



A-A



DETAIL A
TYP. @ ALL 4 SIDES



Selection of the product for adequacy should be made by individuals with knowledge of the intended application, locations, loadings, specifications and requirements of the project.

PROJECT INFORMATION		APPROVAL STAMP
PROJECT:		APPROVED
ADDRESS:		APPROVED AS NOTED
CONTRACTOR:		NOT APPROVED
ENGINEER:		REMARKS:
SUBMITTAL DATE:		
NOTES:		

**FOR ALL
THINGS
FASTENING.**



LOCATIONS NATIONWIDE

888.859.6060

24/7 ONLINE ORDERING

WWW.ALLFASTENERS.COM