

INSTALLATION GUIDE

NEXSPAN2™

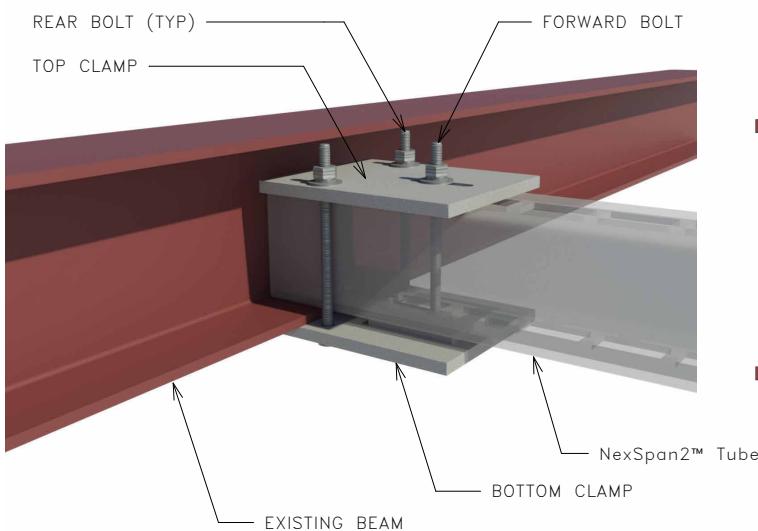
H SERIES

2-5	Installation Instructions - Using NexSpan2™ H Series as Supplemental Steel
6	Installation Instructions - Attaching NexSpan2™ Trapeze to Threaded Rod
7	Disclaimer

Caution: NexSpan2™ H Series shall be installed to existing beam prior to loading, unless adequate support is provided.

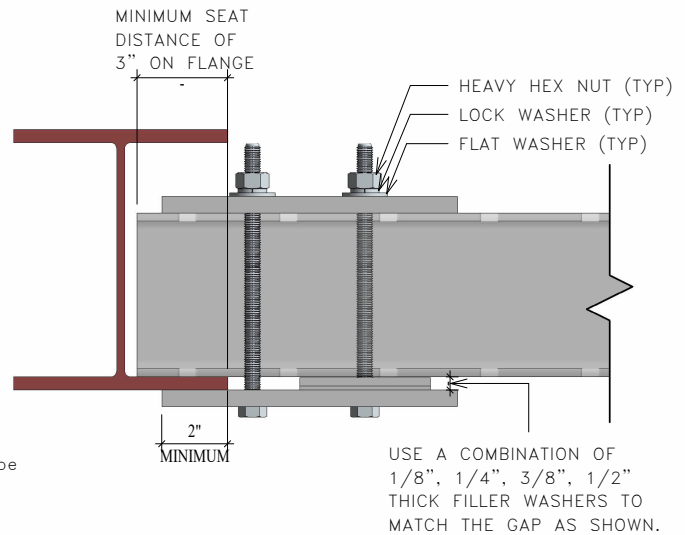
Installation Instructions for using NexSpan2™ H Series Tube as Supplemental Steel

1. Install bottom clamp with forward bolt onto the NexSpan2™ member, with filler washers equal to the beam flange thickness. Do not tighten yet.
2. Rotate bottom clamp 90 degrees from the tube, to allow for tube placement.
3. Place the tube on the supporting member, and rotate bottom clamp back into place.
4. Ensure a minimum seat distance of the tube equal to or greater than 3", at both ends of the tube.
5. Install top clamp to bottom clamp with rear bolts.
6. Torque the two (2) rear bolts to 37ft-lbs.
7. Add shims to the forward bolt if needed to fill the gap.
8. Tighten the forward bolt until the lock washer is fully collapsed.
9. Repeat the process for the connection on the other end of the tube.
10. Attach rod hangers, or piping and fastening hardware as applicable.



Note: Assembly of bolt, washers, and nut may be installed in opposite direction if necessary or preferred, for ease of installation and tightening.

ISOMETRIC VIEW



Note: When less than the bearing distance of 3" is available, utilize retainer style strap or other means to positively attach the clamp to the rear flange.

TYPICAL CONNECTION DETAIL

Galvanization

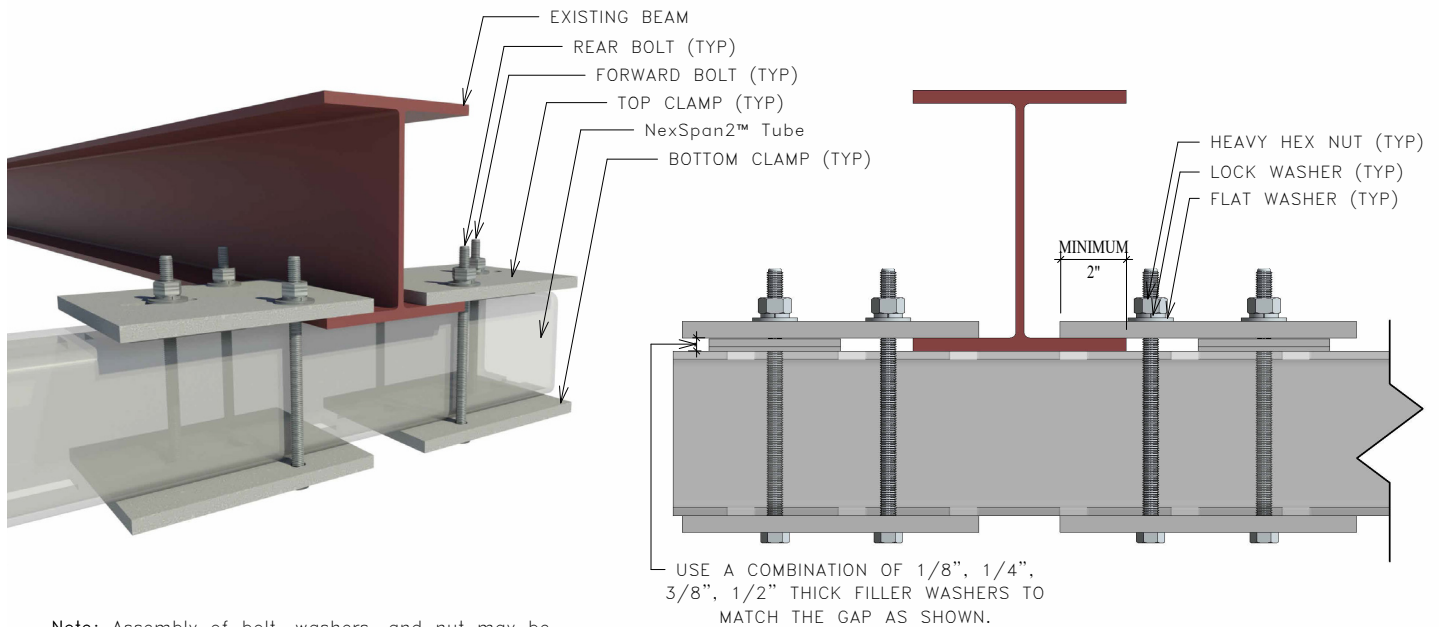
1. In locations where welding is required or where material has been field-cut, and in locations where galvanization has been damaged during handling or assembly, cold galvanizing compound shall be applied.
2. Recommended products include AF1000 Cold Galvanizing Compound, which is a brushed on 95% zinc rich coating conforming to ASTM A780-01, AF3000 Cold Spray Galvanizing Coating, which is a 65% zinc rich spray paint conforming to ASTM A780-92A, and AF3001 Cold Spray Galvanizing Coating, which is a 93% zinc rich spray paint conforming to MIL-P-26915C, MIL-P-46105 and DOD-P-21035A. Equivalent products are also acceptable.



Caution: NexSpan2™ H Series shall be installed to existing beam prior to loading, unless adequate support is provided.

Installation Instructions for using NexSpan2™ H Series Tube as Supplemental Steel

1. Install top and bottom clamp plates with forward bolt onto the NexSpan2™ tube, with filler washers equal to the beam flange thickness on top of the tube, for both clamp assemblies. Do not tighten yet.
2. Rotate top clamp plates 90 degrees from the tube, to allow for tube placement.
3. Place the tube under the supporting member, and rotate top clamp plates back into place so that they are resting on top of the flanges of the supporting member.
4. Ensure a minimum seat distance of the top clamp plate equal to or greater than 2", for both clamp assemblies.
5. Install top clamp to bottom clamp with rear bolts.
6. Torque the (2) rear bolts to 37ft-lbs, on each clamp.
7. Tighten the forward bolt on each clamp until snug tight, with the lock washer fully collapsed.
8. Repeat the process for the connection on the other end of the tube.
9. Attach rod hangers, or piping and fastening hardware as applicable.



Note: Assembly of bolt, washers, and nut may be installed in opposite direction if necessary or preferred, for ease of installation and tightening.

ISOMETRIC VIEW

TYPICAL CONNECTION DETAIL

Galvanization

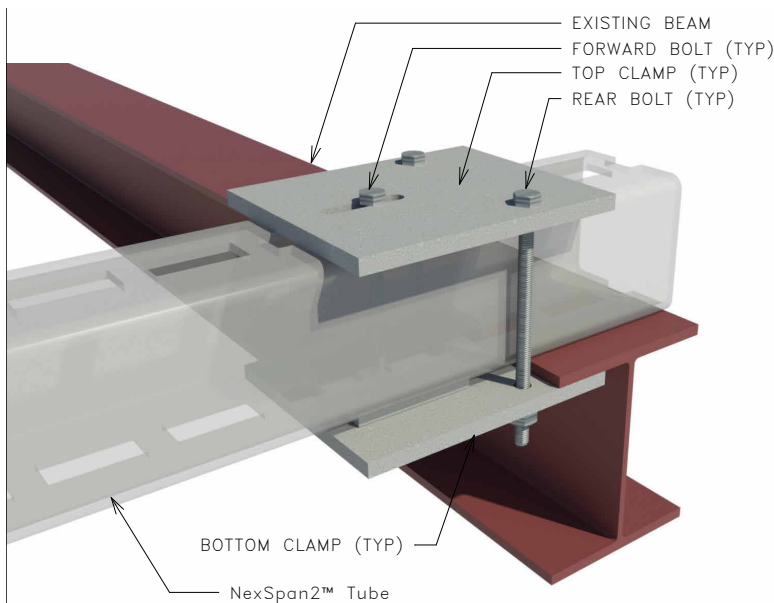
1. In locations where welding is required or where material has been field-cut, and in locations where galvanization has been damaged during handling or assembly, cold galvanizing compound shall be applied.
2. Recommended products include AF1000 Cold Galvanizing Compound, which is a brushed on 95% zinc rich coating conforming to ASTM A780-01, AF3000 Cold Spray Galvanizing Coating, which is a 65% zinc rich spray paint conforming to ASTM A780-92A, and AF3001 Cold Spray Galvanizing Coating, which is a 93% zinc rich spray paint conforming to MIL-P-26915C, MIL-P-46105 and DOD-P-21035A. Equivalent products are also acceptable.



Caution: NexSpan2™ H Series shall be installed to existing beam prior to loading, unless adequate support is provided.

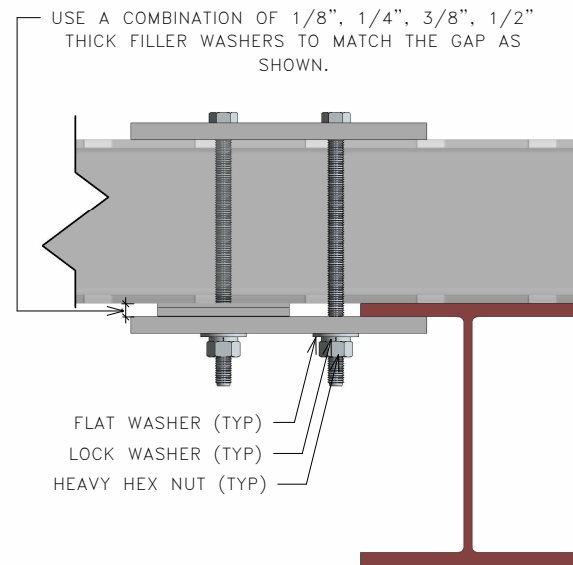
Installation Instructions for using NexSpan2™ H Series Tube as Supplemental Steel

1. Install bottom clamp with forward bolt onto the NexSpan2™ member, with filler washers equal to the beam flange thickness. Do not tighten yet.
2. Rotate bottom clamp 90 degrees from the tube, to allow for tube placement.
3. Place the tube on the supporting member, and rotate bottom clamp back into place.
4. Tube to sit across entire beam flange.
5. Install top clamp to bottom clamp with rear bolts.
6. Torque the (2) rear bolts to 37ft-lbs.
7. Add shims to the forward bolt if needed to fill the gap.
8. Tighten the forward bolt until snug tight, with the lock washer fully collapsed.
9. Repeat the process for the connection on the other end of the tube.
10. Attach rod hangers, or piping and fastening hardware as applicable.



Note: Assembly of bolt, washers, and nut may be installed in opposite direction if necessary or preferred, for ease of installation and tightening.

ISOMETRIC VIEW



TYPICAL CONNECTION DETAIL

Galvanization

1. In locations where welding is required or where material has been field-cut, and in locations where galvanization has been damaged during handling or assembly, cold galvanizing compound shall be applied.
2. Recommended products include AF1000 Cold Galvanizing Compound, which is a brushed on 95% zinc rich coating conforming to ASTM A780-01, AF3000 Cold Spray Galvanizing Coating, which is a 65% zinc rich spray paint conforming to ASTM A780-92A, and AF3001 Cold Spray Galvanizing Coating, which is a 93% zinc rich spray paint conforming to MIL-P-26915C, MIL-P-46105 and DOD-P-21035A. Equivalent products are also acceptable.



Caution: NexSpan2™ H Series shall be installed to existing beam prior to loading, unless adequate support is provided.

Installation Instructions for Attaching Threaded Rod to NexSpan2™ H Series Tube Where NexSpan2™ is Used as Supplemental Steel

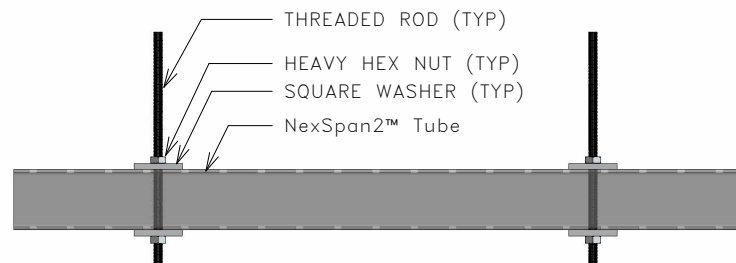
1. Thread the first heavy hex nut down onto the top of the threaded rod, then add the square washer on top of the heavy hex nut.
2. Insert the threaded rod up through the bottom of the NexSpan2™ supplemental steel tube, so that the square washer is in contact with the bottom of the tube, and a portion of the threaded rod protrudes through the top of the tube.
3. Install the top square washer onto the top of the threaded rod protruding through the tube so that it rests on the top of the tube, then add the second heavy hex nut on top of the square washer.
4. Snug tighten the top heavy hex nut.
5. Repeat these steps for any additional threaded rod connections.
6. Install trapeze or pipe hanger assembly. Where installing trapeze, follow instructions below.

Installation Instructions for Attaching NexSpan2™ Trapeze to Threaded Rod

1. Attach the threaded rod hanger(s) to the supporting member per manufacturer's instructions. Where the supporting member is NexSpan2™, follow instructions above.
2. Thread the first heavy hex nut up onto the bottom of the threaded rod, then add the square washer below the heavy hex nut.
3. Install the NexSpan2™ trapeze onto the bottom of the threaded rod just below the square tube, such that a portion of threaded rod protrudes through the bottom of the trapeze.
4. Install the bottom square washer onto the threaded rod snug against the bottom of the trapeze, then add the bottom heavy hex nut.
5. Repeat these steps for any additional connection(s).
6. Level the trapeze by adjusting the nuts and washers as needed.
7. Once level, snug tighten the top heavy hex nut at each connection.
8. Install piping with hardware per manufacturer's instructions.



ISOMETRIC VIEW



TRAPEZE CONNECTION DETAIL (TYP)

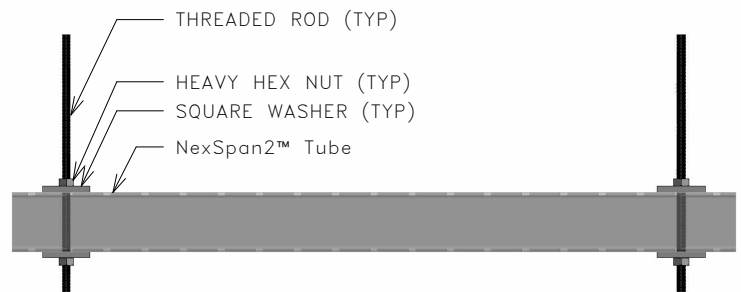
Galvanization

See note on page 1 for information regarding galvanization.

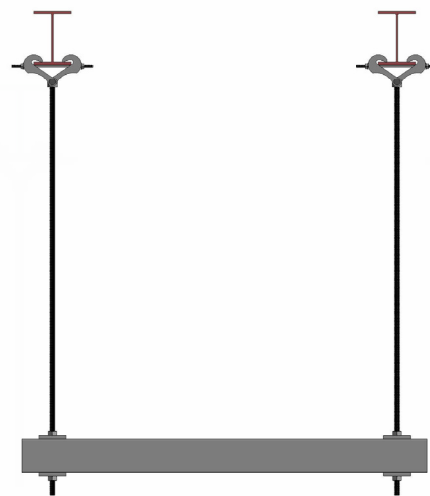
Caution: NexSpan2™ H Series shall be installed to existing beam prior to loading, unless adequate support is provided.

Installation Instructions for Attaching NexSpan2™ Trapeze to Threaded Rod

1. Attach the threaded rod hanger(s) to the supporting member per manufacturer's instructions.
2. Thread the first heavy hex nut up onto the bottom of the threaded rod, then add the square washer below the heavy hex nut.
3. Install the NexSpan2™ trapeze onto the bottom of the threaded rod just below the square tube, such that a portion of threaded rod protrudes through the bottom of the trapeze.
4. Install the bottom square washer onto the threaded rod snug against the bottom of the trapeze, then add the bottom heavy hex nut.
5. Repeat these steps for any additional connection(s).
6. Level the trapeze by adjusting the nuts and washers as needed.
7. Once level, snug tighten the top heavy hex nut at each connection.
8. Install piping with hardware per manufacturer's instructions.



TRAPEZE CONNECTION DETAIL (TYP)



FRONT ELEVATION VIEW

Galvanization

See note on page 1 for information regarding galvanization.

Caution: NexSpan2™ H Series shall be installed to existing beam prior to loading, unless adequate support is provided.

Legal Disclaimer

NexSpan2™ assemblies must be installed in strict accordance with the instructions and specifications provided in this guide. All performance data and load ratings are based on compliant installations only.

Any deviation from these guidelines—including, without limitation, improper assembly, alteration of T-bolt placement, component substitution, unauthorized modification, misuse, or installation under conditions outside the stated specifications—may result in system failure and voids any and all warranties, express or implied, to the maximum extent permitted by applicable law. Any modification to the prescribed T-bolt location or configuration requires independent engineering analysis to verify that required load capacities and performance criteria are maintained.

To the maximum extent permitted by applicable law, Allfasteners and its affiliates disclaim all liability, including, without limitation, direct, indirect, incidental, special, consequential, exemplary, or punitive damages, whether based in contract, tort, or product liability, arising from non-compliant installations. Responsibility for installation rests solely with the installer.

This document is provided for general informational purposes only and does not constitute engineering, legal, or other professional advice. Project-specific conditions, including but not limited to load requirements, substrate conditions, tolerances, and environmental factors, must be evaluated by a qualified design professional. The engineer of record is solely responsible for verifying suitability for the intended application.

NEXSPAN2™



**NEXSPAN2™ ISN'T JUST A PRODUCT LINE –
IT'S A SHIFT IN HOW SYSTEMS ARE BUILT**

LOCATIONS NATIONWIDE

888.859.6060

24/7 ONLINE ORDERING

WWW.ALLFASTENERS.COM